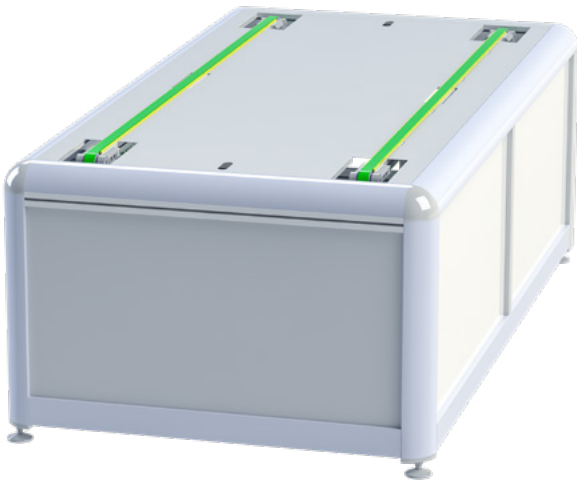


27.A Belt Conveyor

(Repair Station)



Dimensions

HEIGHT (mm)	920
LENGTH (mm)	2500
WIDTH (mm)	1350
WEIGHT (kg)	300

Electrical Characteristics

INPUT VOLTAGE (V)	400 (3 phase AC)
FREQUENCY (Hz)	50 / 60
PEAK POWER (kW)	Slave of EL-Tester
MAX CURRENT (A)	Slave of EL-Tester
PRE FUSE (A)	Slave of EL-Tester

PV Module

PV CELL SIZE (mm)	max.: 2400 x 1310 mm / min.: 1630 x 986 mm
PV CELL ORIENTATION	Long-edge forward

Configuration

CONTROLS	PLC Touch Screen
MODULE LOADING / UNLOADING	Automatic
ALIGNMENT	In-line